



Premier NEMA

Compact Leak Tester

for production testing



- ✓ STOP SHIPPING BAD PARTS
- ✓ END BOTTLE-NECKS
- ✓ MINIMIZE DOWN TIME
- ✓ TROUBLE-SHOOT QUICKLY

Premier NEMA

Modular design allows customization to your needs. Explain your requirements to configure the leak tester specific to your application.

Solutions for your testing needs!



What do you NEED?

- Different measurement types pressure / vacuum / flow
- Different measurement ranges scaled to your needs
- Test modes:
 - ΔP
 - $\Delta P / \Delta t$
 - Flow
 - Blockage
 - Custom, depending on your applications
- Value added application support
- US inventory

What will help solve your problems?

- Multiple programs
- Increased/Decreased sensitivity
- Speed up an existing line
- PLC connectivity
- Data retrieval
- Graphical solutions
- Simple calibration verification
- Easy program changes

Do you require after-sales support?

- Service in Detroit MI ,Charlotte NC
- Traceable Calibrations
- Experienced staff
- 24 hour phone technical support



Applications

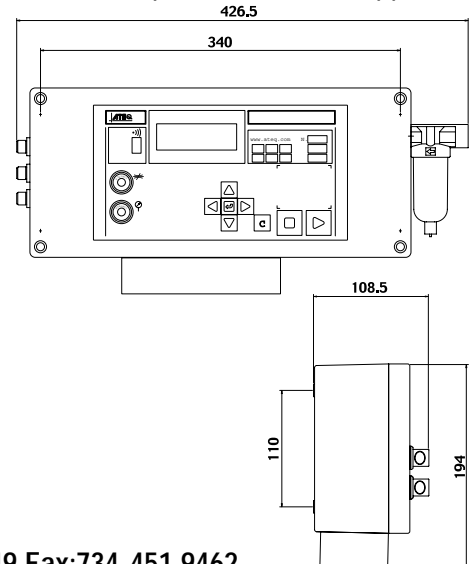


Automotive: shock absorbers, gearboxes, gas caps, carburetors, non return valves, cylinder heads, filters, radiators, seals, cylinders, engine oil and water circuits...

Domestic appliances: bottles, percolators, cookers, steam irons, ovens, washing machines...

Medical: catheters, dialysis equipment, micropipettes, plastic taps, drain bags, syringes, valves...

Packaging: aerosol cans and valves, trigger pumps, ink cartridges, comestic bottles, food sachets...



US Offices:

Northern: Canton (Detroit) Michigan Tel:734-451 9449 Fax:734-451 9462

Southern: Cleveland(Charlotte) North Carolina Tel : 704-278 1534 - Fax : 704-278 4049

Email: leaktest@atequsa.com US Site: www.ATEQUSA.com