

SOLO



Self contained leak tester Gauge pressure decay with solenoids

PREMIER Nema



Self contained leak tester, can be networked. Pressurized spool valves, differential pressure decay

PREMIER



Self contained leak tester, can be networked. Pressurized spool valve Differential pressure decay. F

PREMIER P



self contained leak tester gauge pressure decay with pressurized spool valve.

PREMIER G



Self contained leak mass flow tester with pressurized spool valves. Can be networked

PREMIER D



Self contained mass flowmeter with pressurized spool valve Can be networked

PREMIER ERD



Self contained pressure ramp generator with simultaneous flow reading

CDF



Flow Standard

PREMIERHP



Self contained leak test differential pressure decay (high pressure > 290 PSI).

POLO



Modular leak tester(separate user interface) pressure decay or leak mass flow

QUANTUM



Self contained leak tester with internal power supply and double display

QUANTUM GRAPHIC



Self contained leak tester with graphic display and internal power supply. Can be used as a network central.

QUANTUM



Self contained volume tester with internal power supply and double display

PREMIER MF



Self contained differential mass flow leak tester

TB520



Self contained instrument for rechargeable battery test

LEGACY CENTRAL



Instrument Network Central unit with graphic display

Excalibur Central



Instrument Network controller, user interface on a computer using Excalibur or a custom software, powered through the network cables

Nema Module



Network leak tester, standard valve

Nema Mini Module



Network leak tester mini valve No pressure regulator, No input outputs No external valve trigger, powered through the network cables. Ultra compact

Standard Module



Network leak tester, standard valve

Compact Module



Network leak tester, standard valve No pressure regulator

INTERFACES F3/F5 and Fa /F5



Built in key panel



For POLO or LEGACY CENTRAL Start-Stop-Program Selector Pass/Fail lights

I/O MODULE



14 inputs / 14 outputs, 3 modules maximum. power through the network cables

Remote control S5



Start- Stop-Program Change and Display – Pass/Fail lights

MODULE PS5



Power supply distribution on a nema min Network. to prevent cable overload (4 maximum per module PS5).

BACKUP MODULES



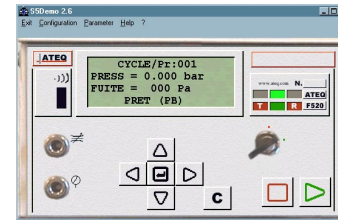
Workstation backup or test result storage.

REMOTE CONTROL 2 FUNCTIONS



Start+stop

S5 DEMO Software



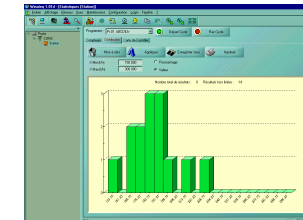
Control software for one Self contained Instrument

REMOTE CONTROL RC5



For independent operation of network modules,

EXCALIBUR SOFTWARE



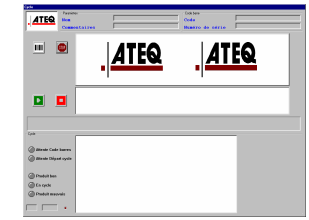
Control /parametering/SPC/data storageFor a network of series 5 Instruments (needs a central)

CONSOLE FOR RC5



For Remote control RC5. Start+ stop program selector 4 programmables keys.

SESAME SOFTWARE



Control/sequencing of a network of ATEQ instruments (S3, S2P, S5).